

## Migrant Education Program Overview: Your Legal Responsibilities

Shawn Cockrum  
Director, Migrant Education and English Language Learning  
Missouri Department of Elementary and Secondary Education

**"Rising tides don't lift all  
boats, particularly those  
stuck at the bottom."**

General economic prosperity does not always  
mean that the everybody benefits.

*Rev. Jesse Jackson (1984)*

**"A rising tide lifts all  
boats."**

*"General prosperity is best for individual welfare."*

*John F. Kennedy (1963)*

**Some students come to us in  
yachts...and some students  
come to us in rowboats.**



## Definition

A "migrant student" is defined as a student who is, or whose parent/guardian is, a migratory fisher, dairy worker, or agricultural worker, AND who in the preceding 36 months has moved from one school district to another in order for the worker to obtain temporary or seasonal employment in agricultural or fishing work.

## Many MEP Requirements...

### *In MSIP and NCLB:*

- Identification of Students
- Assessments
- Priority for Services Action Plan
- Planned Supplemental Activities
  - High School/MS/Elem
  - Early Childhood
  - Support Services

## Our Migrant Students...

- Gaps in education
- Low income
- Often English language learners
- Highly mobile
- Lack of access to health services
- Housing problems

## Many MEP Requirements...

- Comprehensive Needs Assessment
- Annual Evaluation of Services
- Local Parent Advisory Councils (PACs)
- Summer Programs if Needed
- Reports and Applications

## Here's the Good News...

### Many Resources Available to You

- MELL Recruiters and Instructional Specialists
- DESE Support/Resources
- USDE Office of Migrant Education – Collaborative and Supportive Approach

## First Things First...

Gather information on your migrant students and their needs

Find out what resources you can access outside of your MEP funds

- Local
- State
- Federal
- Community/Non-Profit Organizations
- Health care providers

## Top 5 MEP Issues for Administrators

- 1) Needs Assessment, Evaluation of Programs and Use of Data
- 2) Identification & Recruitment
  - Effective Recruitment
  - Accurate Eligibility Determinations
- 3) Allowable Use of Migrant Funds
- 4) Serving Priority for Services Migrant Students
- 5) Focusing on Services that Impact Achievement

## Issue #1: Needs Assessment, Evaluation of Programs and Use of Data

*Give me six hours to chop down a tree and I will spend the first four sharpening the axe.*

Abraham Lincoln

## Local MEPs must:

- Identify the needs of its migrant students
- Select the proven practices to be used for meeting the needs
- Evaluate the effectiveness of its instructional and support services
- Use data to inform its programs and demonstrate migrant student results

## Program Evaluation

- How will you demonstrate that instructional and support services were effective?
- The importance of migrant student data and tracking of progress

## Needs Assessment for Local MEPs

Data to review may include but is not limited to:

- Student academic assessments;
- Sources of student data to determine progress towards graduation;
- Surveys, etc.

## Issue #2: Identification & Recruitment

*"Education: a debt due from present to future generations."*  
George Peabody

## Correctly Identifying Eligible Students

### *MSIP Requirements*

- Written procedures
- Ask the questions
- Reporting to MELL
- Re-Certification
- Eligibility Validation

## Concern #3: Allowable Use of Migrant Funds

*Using Your Migrant Funds In Compliance With Federal Statute and Regulations*

## The Good News...

### **Resources**

- MELL ID&R Specialists
- In-District Training available for Support Personnel
- MELL Conference
- National Forums and Conferences

## Using Migrant Funds: Questions To Consider

- Is the activity or service tied to your needs assessment?
- Are migrant funds first being used to target the identified needs of PFS students?
- Does the activity or service meet needs not addressed by other services or programs available?
- Is the cost to provide the activity or service *reasonable and necessary*?

## Supplement Not Supplant

- Migrant funds are supplemental to *all other funds* - Federal, State and local funds.
- Our migrant students are regular students.
- Our migrant students are eligible for:
  - Title I services; and
  - National School Lunch Program.
- Our migrant students may be eligible for:
  - Services for Homeless Students.

## Supplement Not Supplant: Migrant-Funded Staff

- What percentage of their salaries are paid with migrant funds?
- What are their duties and are they directly-related to serving migrant students?
- Are their duties *supplemental*?

## Supplement Not Supplant: Questions to Consider

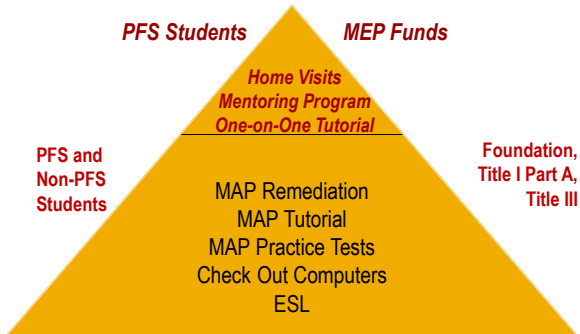
- Is this activity/service already provided by another program or could it be?
- If migrant funds were not available, would this activity/service still be offered?
- Who will be participating in this activity/service?

## Concern #4: Serving Priority for Services Migrant Students

“Fill what's empty. Empty what's full. Scratch where it itches.”

*Alice Roosevelt Longworth*

## Targeting Services



## Concern #5: Focusing on Services that Impact Achievement

“Either you run the day or the day runs you.”

*Jim Rohn*

## Meeting the Needs of the PFS Student

- Each PFS student must be assessed in terms of academic needs.
- Specific needs of PFS students must be addressed with MEP funds before these funds are spent on non-PFS students.
- Academic progress of PFS students must be monitored on an ongoing basis.
- LEA must evaluate success of services offered to PFS students on a regular basis.

## Will It Increase Migrant Student Achievement?

- Addresses unique needs of PFS and non-PFS migrant students
- Is an instructional or support service not offered through any other fund source or organization
- Is scientifically based or has evidence of effectiveness
- Can be measured for effectiveness

## DESE Guidance

Go to

[www.dese.mo.gov/divimprove/fedprog/](http://www.dese.mo.gov/divimprove/fedprog/)

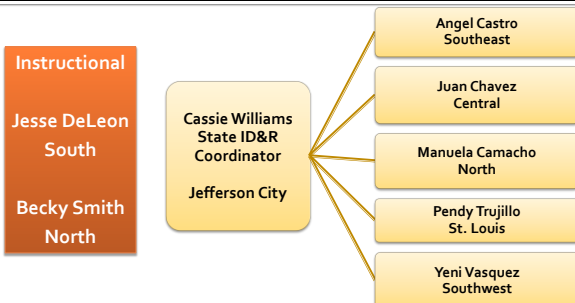
click on "Administrative Manual –  
Program Guidance"

## Your Other Resources...

- National Association of State Directors of Migrant Education  
[www.nasdme.org](http://www.nasdme.org)
- Missouri Migrant Education and English Language Learning <http://dese.mo.gov/qs/me/>
- R.E.A.C.T.S. Records Exchange Advice, Communication, and Technical Support addressing the migrant records exchange initiative .  
<http://reactsmsix.ed.gov/>



## Your State MEP Team



<http://dese.mo.gov/qs/me/staff.html>

## Thank You!

### Shawn Cockrum

Director

Migrant Education and English Language Learning  
Missouri Department of Elementary and Secondary  
Education

(573) 751-8280

[Shawn.cockrum@dese.mo.gov](mailto:Shawn.cockrum@dese.mo.gov)